



Te Ara Māia Newsletter

Term Whā, Week Tahi 2023

Where students learn creatively and strive for excellence preparing for lifelong learning
Kia auaha te ako a ngā ākonga me te whai i te iti kahurangi mō te akoranga tūroa

Kia ora Parents and Whānau of Māia students,

We are ready for a very busy and engaging Term 4! Please support your tamariki by bringing a broad-brimmed hat to kura every day. We advise all students to wear sunscreen and have some available at school for reapplication.

Thank you for your support with the Māia play's last term. We are very proud of our learners and what they have achieved. Many thanks to Mark Anthony, who very kindly filmed them for us.

[Māia Button Part 1](#) , [Māia Button Part 2](#) , [Māia Munn](#)



Key dates for Māia Students:

- Whole School Athletics Day - Week 2, 17th Oct
- 3-way Learning Conversations- Week 2 (18-19th Oct), 3 (24th Oct)
- Camp Pukaha- Week 4, 31Oct-Nov 1 (Munn) and 1-2 Nov (Button)
- Maia Rock climbing + Kayaking- Week 5, 7th Nov
- Speech Finals - Week 7, 22nd Nov
- Wellington Col Orientation day- Week 7, 23rd Nov
- Yr 7 & 8 Gardasil 2nd Dose- Week 8, 27th Nov
- Y8 Wellington High Experience day - Week 8, 30 Nov
- Celebration of learning - Week 9, 6th Dec
- Māia Rogaine - Week 10, 12th Dec
- Leavers Dinner - Week 11, 18th Dec
- Leavers Assembly- Week 11, 19th Dec 1.45pm

Graduation Trees

This week we were fortunate to have a visit from the team at Bunnings who offer a 'graduation tree' to each class of year 8 students. Our year 8s worked together to plant the two kowhai trees in the playground gardens. We ended the tree planting ceremony with a couple of waiata. The students really enjoyed this- perhaps we will have some young volunteers for the planting day this weekend!



Speeches

This year, our theme for speeches invites students to imagine an idealistic view of human society—a society that transcends the boundaries of the present and seeks to redefine our shared future. We will explore the essence of what it means to be human and to live harmoniously. We will consider values, housing, materials, resources, language, interaction, and equity.

Geometry

Students will be designing a piece of Neo-Pacific Architecture, and creating a scale model in pairs. Neo-Pacific architecture is a futuristic and eco-friendly architectural style inspired by the beauty and sustainability of the Pacific Ocean and its surrounding regions. It incorporates elements of nature, advanced technology, and sustainability to create buildings that are not only functional but also harmonious with the environment. As a part of this unit we will be looking at past and present architecture from around the Pacific. If this is an area you have expertise in, we would love to hear from you!

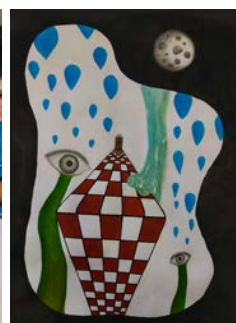
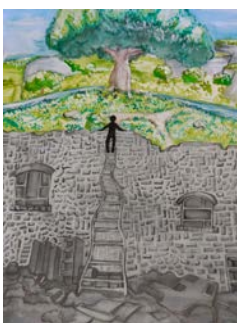


Te Reo Māori

Matua Jason will continue the great work he has been doing with the Tamariki. Once we have mastered the pronoun, we are hoping to continue moving onto sentence structures. In our art unit this term we will be building on our knowledge of te Atua Maori and creating some mixed media visual representations.

Health

Our health-hauora unit in term four is 'Navigating the Journey'. This relationships and sexuality education programme is an excellent resource provided by Family Planning New Zealand. Relationships and sexuality education is a key component of the health and physical education learning area of The New Zealand Curriculum. The focus of this unit will be informing and discussing topics such as friendships; supporting self and others; sexuality and diversity; critical thinking about gender; individual rights; dealing with social messages and stereotypes; pubertal change; body image; risks, and issues; and how to access health care. These are all important issues confronting our rangitahi today.



Athletics

Setting goals and challenging ourselves physically - beyond the one day event. This term we will set goals and improve our ability in quoits, sprints, relays, vortex, high jump, and long jump.

Athletics day is next week! Students need to be prepared with - lunch, two water bottles if possible, hat, sunblock, appropriate clothing for the elements (jacket). Postponement date is Wednesday 25 October.

As it is a summer term, we are expecting children to come to school with broad brimmed hats. These are used for play times and any time we are learning outside. Please support us with this by ensuring that your tamariki come to school prepared.



Home Learning

Our expectations for home learning are designed to support learning in class and not overwhelm students who are busy with after-school activities and enjoying their youth. We expect that a Māia student will:

- Read independently for at least 30 minutes each day.
- Work on Maths buddy for at least 30 mins per week.

Careers Education

Our learners would love to hear about your career. This would involve telling the children about how you came to your career choice, the educational pathways you had to follow, and the sacrifices that were necessary to achieve your goals. A particular point we would like to convey is the idea that unexpected opportunities often lead to unanticipated careers. If you happen to be available to talk to us please contact us to make a time.

If you have any questions about our programme, or would like to discuss anything concerning your child, please don't hesitate to get in touch, we are always keen to partner with you.

Nga mihi,

Libya Munn; Alistair Button

