

KELBURN NORMAL SCHOOL NEWSLETTER

NGĀ TĀTARAKIHI O AHUMAIRANGI PĀNUI

THE BIRD'S EYE VIEW ISSUE 9 WEEK 9, TERM 1 2024 ~

RĀHINA 25 POUTŪ-TE-RANGI ~ MONDAY 25 MARCH



Where students learn creatively and strive for excellence in preparing for lifelong learning
Kia auaha te ako a ngā ākonga me te whai i te iti kahurangi mō te akoranga tūroa

Monday 25 March - Board of Trustees Meeting @ 6.30 pm

Wednesday 27 March - Y1-Y4 Wheels Day

Thursday 28 March - **School Closed** - Kahui Ako Staff Only Day

Friday 29 March - **School Closed** - Good Friday

Monday 1 April - **School Closed** - Easter Monday

Tuesday 2 April - **School Closed** - Easter Tuesday

Welcome to Violeta A-C in Tupu Tahi.

As we enter week 9, I am conscious that we have two short weeks ahead of us - Monday to Wednesday this week and Wednesday to Friday in week 10.

A reminder that -

- This Thursday school is closed as we have Staff Only Day at Wellington College with Kahui Ako.
- School is closed on Tuesday. The reasoning for this is that the Tuesday following Easter Monday is a school holiday (but not a statutory holiday), meaning schools must not be open. The terms and holidays are usually set so that Easter occurs during the first term break and the Easter Tuesday school holiday goes unnoticed. However, in some years Easter falls much earlier than usual such as in 1997, 2005, 2008, 2013, 2016, 2021 and 2024.

3-way Learning Conversations and Goal Setting are next week. These are the second of seven whānau/kaiako connections that we do across the year to share student progress. They are being held Wednesday, 4th April (3.15 to 6pm) and Thursday, 5th April (3.15 and 7.15pm). To make a booking, click on the [schoolinterview link](#), and enter the code **bwrba**

PTA AGM - Thank you to the PTA which works so hard for our kura. A team met last week to confirm the AGM and plan events for this year. Andrea and Anneka have been elected as Co-Presidents, Mimmi as secretary and Brendon is continuing as treasurer. Unfortunately, due to a bad weather forecast the school picnic/gathering has been reset for Friday April 5th.

Cross Country - We have confirmed Tuesday, 9th April (week 11) as our school cross-country date at Karori Park so please lock that date into your diaries. We will be following last year's plan with the competitive run and the fun run.

Band Concerts - the first outings for our school rock bands are next Friday at 11am. Each week they rehearse, and this is a chance for them to share their progress. As they practise under my office, I can confirm that the songs are now recognisable.

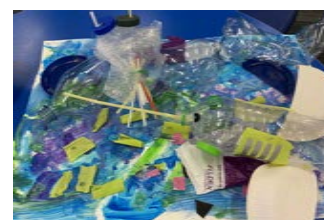
What's the latest update from the Tupu team?



We love mathematics. Tupu Tahī has been developing their knowledge of doubles in different ways. At Mahi Ngātahi we were using the numicon equipment to see different patterns and ways of making doubles to 20. Lots of problem solving and mathematical thinking happening here.



Tupu Toru have continued our exploration of sea creatures by deep diving into the issue of plastic in our waters. Here, we have used different types of rubbish and recycling to create art and writing, to raise awareness about the sea creatures and plastic in our oceans. *Busy, fast, parrot fish. While they were working they swished their fins in the reef of colourful coral. It shone on sunny days. It went black in the rain. When it was stormy, it turned to ashes, but when the sun came back out it reappeared. Team Fish (Harriet, August, Eden, Arthur, Valeska)*



Tupu Rua continue to enjoy learning about different sea creatures. We have been writing fiction and non-fiction stories about the different creatures we learn about. *I am the shark. I ate the fish. (Pagan)*

I like great white sharks because they are cool. The great white shark is the fastest shark in the world. (Ferne) An orca is actually a dolphin, but...it's a whale too! That's cool. I think whales are really amazing. To talk to one another they sing songs." (Nicholas) I am a shark. I like fish because I like the taste." (Henry) Blue whales are the biggest thing. As big as a tennis court. They have to come up for air to breathe. (Carys)

What will we be up to next in the Tupu team...stay tuned to find out.

Looking Ahead - Event Dates - Term 1, 2024

You can see the times and add these events to your calendar by using the KNS App

Week	Date	Event
Week 9	Monday 25 March	Board Meeting @ 6.30 pm
	Wednesday 27 March	Wheels Day Year 1-4
	Thursday 28 March	Kahui Ako Staff Only Day
	Friday 29 March	Good Friday School Closed

Week 10	Monday 1 April	Easter Monday School Closed
	Tuesday 2 April	Easter Tuesday School closed
	Wednesday 3 April	3-Way Learning Conversations/Goal Setting 3.15 pm to 6.30 pm
	Thursday 4 April	3-Way Learning Conversations/Goal Setting 3.15 pm to 6.15 pm
	Friday 5 April	Band Concert 11 am to 11.40 am Whanake Swimming - Rua (Blair) 12pm-1.30 pm, Toru (Harper) 12.30pm-2pm, Tahī (Bishop) 1pm-2.30 pm PTA School Picnic 4:30pm - 7:00pm
Week 11	Tuesday 9 April	School Cross Country 9am - 2pm
	Thursday 11 April	Music Assembly 9:45am - 11am
	Friday 12 April	End of Term

School Notices

Registrations open soon for the Kelburn Normal School netball club! The club is open to all students from year 3 and up (and there's also a special tournament for year 2s).

The Wellington West netball season starts on 4 May and runs until 31 August, with a break for the school holidays. If your child (or children) are keen please email jarrod.baker@gmail.com with their names and the year they're in so we can gauge interest. We'll also be looking for keen parents to coach teams (and keen older siblings to referee) - if that's you, please get in touch. More information about the club can be found at <https://www.sporty.co.nz/kelburn>

Parking Boundary Rd ~ Please **do not** park in front of the garages on Boundary Road. We have received complaints from neighbours who regularly have their vehicles blocked in by parents who have parked in front of their garage.

Some reminders for school and the summer months :-

- Please ensure your child has their sunhat at school every day and that it is clearly named.
- Please name all clothing, lunchboxes, drink bottles and tupperware so we can find the owner if left outside.
- As the weather is warmer, please consider walking to school as often as possible. We know a large percentage of the school population live within 1km of the school therefore, a good brisk walk to and from school is a great way to look after the physical well-being of whānau as well as look after the environment.
- If your child is going to be away then please notify the school via the App, ring 04 4759351 or email admin@kelburnnormal.school.nz
- For those using the drop-off zone on Kowhai Rd please ensure you adhere to the time restrictions.

Enrolling for Bee Healthy - If your child missed out you are able to make an appointment directly with Bee Healthy.

There's two easy ways to enrol your child with Bee Healthy Regional Dental Service:

1. Complete an [online enrolment form](#), or
2. Visit your nearest [Bee Healthy Dental Clinic](#) and complete an enrolment form.

Babies born in the Wellington Region are enrolled at birth with Bee Healthy.

If you have questions about enrolment, eligibility, or unsure if your child is enrolled with Bee Healthy, please call 0800 TALK TEETH (825 583).

If you have changed address or phone number/s and need to update your details [click here](#)

[KNS Parent Chat WhatsApp Group](#)

The PTA has a WhatsApp group to enable all the KNS community to communicate with each other about all things KNS. If you want to join this group, please email us on pta@kelburnnormal.school.nz with the following information:

- Your name
- Your phone number
- Your child's name and class

School App - Contact Details - Please check your contact details on the school app to ensure we have the correct details. If changes are needed please email these to admin@kelburnnormal.school.nz

Teacher Messages - a sort option has been added to the teacher messages section on the school app so parents can easily search for the latest message in date order.

Downloading the app - for those needing assistance with downloading the app please check the app [login video](#) on our website for parents

EzLunch Menu - Subway Wednesday / Pizza Thursday / Sushi Friday [Click here for the Menu](#)

School Clubs and Ensembles Timetable

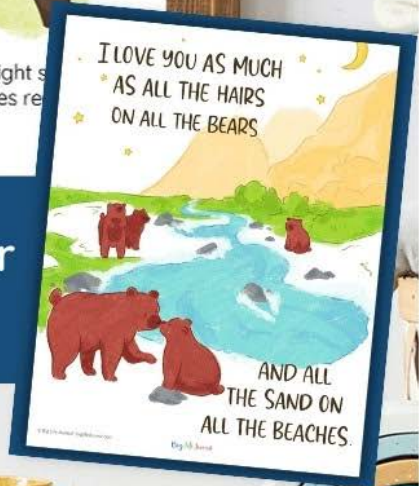
Monday	Tuesday	Wednesday	Thursday	Friday
Xylo Beats - (Ys 4,5, 6) 8.30 - 9.30am Katharina Mahler Room	Orchestra - 8.30 - 9.30am Katharina & Rachel Mahler Room	Piccolo - (Yrs 4, 5, 6, 7) 8.30 - 9.30am Anna Sedcole Mahler Room	Lyrca - Yrs 5 - 8 8.30am-9.30 am Anna Sedcole Mahler Room	Kapa Haka - Yrs 5 - 8 Henare 8.30 - 9.30am Hall
Kapa Haka - Y1-4 1.30 - 2pm Miss Bishop & Jeremy Hall	Code Club - 1.10 - 1.40 Miss Sanders Māia space	Tui Choir - 8:50am Years 2 & 3 Ms Wilby Hall		Xylofun 8.30 - 9.00 am Katharina Mahler Room
Eco Club - Miss Molloy 1.10-1.40 Tupu space		Chess Club - Alistair Button 12.40 - 1.20pm Māia		

School Term Dates 2024

Term	Start Date	End Date	Public Holidays/Teacher Only Days
Term 1	Wednesday 31 January	Friday 12 April	Tuesday 6 February - Waitangi Day Thursday 28 March - Kāhui Ako Teacher Only Day Friday 29 March - Easter Friday Monday 1 April - Easter Monday Tuesday 2 April - Easter Tuesday
Term 2	Monday 29 April	Friday 5 July	Friday 31 May - Teacher Only Day Monday 3 June - King's Birthday Friday 28 June - Matariki
Term 3	Monday 22 July	Friday 27 September	Friday 30 August - Teacher Only Day
Term 4	Monday 14 October	Wednesday 18 December	Monday 28 October - Labour Day Tuesday 29 October - Teacher Only Day



Includes a Decorative Poster & Coloring Page



Kelly Club - Changes to Childcare Assistance - check if you qualify!

More families will now qualify for Childcare Assistance and the rate will increase for those already qualified, which means you may be eligible for assistance to send your child to Kelly Club. Please follow this link to find out more: https://drive.google.com/file/d/1EgHRGbeAEvTHYilaBHp7uauZzw_mwIJA/view

Kelly Club - Check us out on Facebook - [Click Here](#)

For enrolments and enquiries, contact the Supervisor on 021 744636 or kelburnnormal@kellyclub.co.nz

Kelly Club Programmes focus on giving children aged between 5 and 13 the opportunity to do things they enjoy in a safe, supportive, and encouraging environment.

Kelburn to Enrol go to www.kellyclub.co.nz



General Information: We believe in giving children opportunities to do the things they love and enjoy in a supportive and encouraging environment. We provide quality childcare in safe and fun surroundings for children out of school. Our holiday programme is focused around sports, games, and outings to local attractions. Our friendly staff are passionate about working with children. They are provided with training on behaviour management techniques, first aid and activity planning/delivery.

Who can attend: Children aged 5-13 yrs

What do you need to bring: Shoes and appropriate clothing, jacket or sweatshirt, hat, drink bottle and food.

Food: Please bring plenty of packed food and drink for morning tea/lunch/afternoon tea. Lunch will be from approximately 12:30pm to 1:00pm each day.

Programme activities: Programme activities are adapted to suit children of all ages and children may be grouped by age depending on numbers. Programme activities may vary without notice dependent on weather conditions and programme numbers.

Payment details: Payment is required before the holiday programme begins. An invoice will be issued when a completed booking is received. All payment details will be included on the invoice.

Work and Income OSCAR Subsidy: Parents / caregivers that meet certain criteria will be able to access a WINZ subsidy to help cover the cost of our programme. For more information visit www.workandincome.govt.nz

Please note: Every care will be taken to ensure the safety of your child/ren and their property. However, organisers of Kelly Club accept no liability for any injury sustained to your child/ren or any loss or damage to his/her property whilst at a programme. If your child/ren are collected late after the conclusion of the programme you will be charged \$20 per 15 minutes or part thereof.

Website: KC Custom U...
Contact: KC Contact ...
Email: KC Email
Phone: KC Phone
Facebook: KC Facebook...
Address: Venue Adre...

APRIL 2024 HOLIDAY PROGRAMME

VENUE NAME

	Mon 15 April	Tues 16 April	Wed 17 April	Thurs 18 April	Fri 19 April
WEEK 1	<p>KELLY CLUB NINJAS Hi-yah! It's time to train and chop through the fun at Kelly Club. Together let's find your ninja name!</p>	<p>RAINFOREST ADVENTURE Silently creep into the evergreen forest for an adventure. Will you be as fast as a jaguar or as slow as a sloth?</p>	<p>EVENT DAY Join us for an awesome trip day to Laserforce, Wellington. \$20 extra for the day. Please remember a big lunch, drink bottle, shoes and a hat.</p>	<p>KIDS VS STAFF Join for a day full of fun! We can't wait to battle as we enjoy Kids vs Staff together! Will the staff hail victorious, or will the kids take over and show them who's best!</p>	<p>ROCK 'N' ROLL Get ready to rumble and rock on your air guitar. Today we dance the day away.</p>
WEEK 2	<p>MAD SCIENTISTS BOOM! We're turning into mad scientists today as we enjoy a day full of experiments! Will our tests lead to success? Only one way to find out!</p>	<p>SERGEANTS & SOLDIERS Being in the special forces is an honor and takes real bravery. Today we will acknowledge those brave men and women that represent us!</p>	<p>EVENT DAY Join us for an awesome trip day Ice Skating. \$20 extra for the day. Please remember a big lunch, drink bottle, shoes and a hat.</p>	<p>PUBLIC HOLIDAY</p> <p>ANZAC DAY No programme today, see you on Friday!</p>	<p>LET'S GET DICEY Bring the games you love playing with your family to life. Do you think you've nailed all the classic board games? Try it in the human edition.</p>
	FULL WEEK: \$280	FULL DAY: \$60	SCHOOL DAY: \$48	HALF DAY: \$40	EVENT DAY: KC HP Trip ...
	KC HP Full ...	KC HP Full ...	KC HP Schoo...	KC HP Hall ...	KC HP Trip ...



BOOK ONLINE NOW AT www.kellyclub.co.nz

PTA News

AKOTECH CodeCamps April School Holidays - EARLY DISCOUNTS

Our holiday camp allows children from the ages of 7-12 to develop 21st century skills in a fun and action packed environment. Create and train your own AI Avatars, make games, code robots & go to work for a simulated Tech Gaming Studio to build games for a big pretend client.

Develop confidence & initiative through design, creativity, solving problems, presenting & collaboration. Create your own games, worlds and apps to make our world a better place.

We also have **Literati Lab** just for girls

Venues: Queen Margaret College, Thorndon

Dates: 15th - 18th & 22nd - 26th April

Book Now at www.akotech.nz **EarlyBird Save Up to 21% Until 22nd March Siblings Save 6%**

Northland St. Anne's Autumn Fair

The Northland St. Anne's Autumn Fair will be held in the Church Hall (corner Northland and Randwick Roads), 9\30am – 1.00pm on Saturday 23 March. Food stalls will include a deli featuring home-made cakes, jams and marmalade, waffles, morning teas and barbecued sausages. There will also be children's clothes and toys, crafts, plants and books stalls, Any fair contributions can be left at the back of the Church.

THE WINTER PROJECT

WHO WE ARE:

The Winter Project is a student-led charity group run by five Year 12 students from Samuel Marsden Collegiate School in Karori. We collect second-hand winter woolens and deliver them to schools in the wider Wellington region who are in need of warmth for the cold winter months ahead.



CONTACT US



FACEBOOK

The Winter Project

INSTAGRAM

@_thewinterproject

EMAIL

winterprojectwgtn@gmail.com

WHAT WE NEED:

Please bring any preloved, clean, warm clothing items in good condition. These can be anything like scarves, beanies, gloves, blankets, jerseys, tops, jackets, raincoats, puffers, warm pants or shoes. There will be a box placed somewhere around the school to put your items in. Thank you for your help!



Karori Junior Hockey Club winter registrations are now open until 28 March for the 2024 season at <https://kjhc.org.nz/>