

KELBURN NORMAL SCHOOL NEWSLETTER

NGĀ TĀTARAKIHI O AHUMAIRANGI PĀNUI

THE BIRD'S EYE VIEW ISSUE 38 WEEK 8, TERM 4 2023

RĀTŪ 28 WHIRINGA-Ā-RANGI ~ TUESDAY 28 NOVEMBER



Where students learn creatively and strive for excellence in preparing for lifelong learning
Kia auaha te ako a ngā ākonga me te whai i te iti kahurangi mō te akoranga tūroa

This week:

Tuesday 28 November - Whānui Swimming; Pack the Bus donations collected at 12 noon, Musical Refreshment @ St Andrew's on the Terrace 6pm

Thursday 23 November - Tupu Swimming, Wellington High School - Experience Day for Y8s **enrolled** in 2024

Kia ora koutou,

Welcome to Emilie S in Tupu Miller

As we approach the last three and a half weeks I just want to say thank you to our tamariki and teachers who are still working hard, keeping the learning in place. Kelburn is still a very busy place at the moment, but our manaakitanga is strong as we work together to build and retain our special place and culture.

As the days are getting longer please keep an eye on your tamariki as some of our children are very tired. They lead very active lives at school, working hard and exercising, and they need their rest, to refresh and sleep to have 'fuel in the tank' for each new day.

Staffing

I want to acknowledge Ali Laing's retirement. Ali has been working at Kelburn for many, many years in our literacy support area, as our reading recovery teacher and recently as our Literacy support teacher in Tupu. She stepped away this term to have hip replacement surgery and has been recuperating at home. Despite her incredible passion for teaching, and our students, Ali has decided it is time to enjoy time away from teaching at Kelburn and to spend time with her partner Rob, closing an outstanding career in education over decades in both the UK and NZ. Congratulations Ali and thank you - we wish you every happiness in your years ahead - and thank you.

Liz Brown will finish up at Kelburn from the beginning of March 2024 as our ELL and International teacher (and so much else). Liz has been so generous and versatile in her time at Kelburn, supporting so many students and teachers throughout each year and we thank her for all that she has brought to our kura. She has helped us out in so many different ways in her time here, and been part of so many projects, particularly supporting so many students to learn English and to access the curriculum - thank you Liz.

Replacing Liz will be Rachel Smith, who is a trained teacher, and currently working in our Learning Support Team. Rachel will take on the responsibility for ELL and International student tuition.

Musical Refreshment - Our annual Musical Refreshment concert at St Andrew's on the Terrace is on tonight. We will begin promptly at 6:00pm, and finish around 8:00 pm. There will be a short interval halfway through. We will collect a koha for the Red Cross on the door, so please bring some coins.

Junior Kapa Haka and Tui Choir are both in the first half, so these younger performers can leave at the end of the first half - about 7pm.

The event ends with a massed item in which the Orchestra, Piccolo, and Lyrica perform together. On the night

- Lyrica, arrive at 5:30, please wear blue T-shirts.
- Senior Kapa Haka, arrive at 5:30, meet upstairs; please wear your uniforms.
- Orchestra, arrive at 5:30pm.

- Piccolo (wear bright colours), Tui, Xylobeats and Junior Kapa Haka (wear a dark coloured t-shirt), should arrive at 5:45pm.

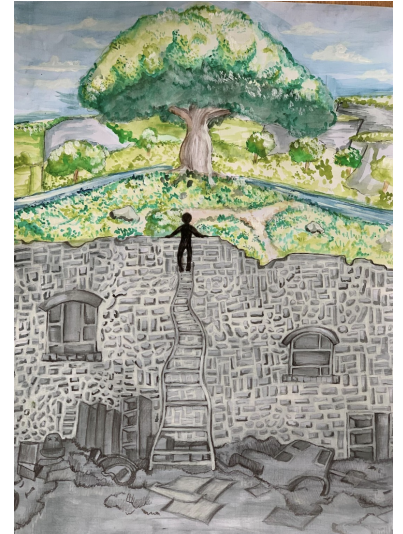
Pack The Bus - Thank you so much for the gifts for the City Mission's Pack the Bus. The Breeze brought the Bus around today and our tamariki loaded it up. We have received donations from you of toys, Christmas food and other gifts like toothbrushes, nappies. These gifts will be gratefully received by the City Mission.

Speech Finals - Y 5-6 and Y7-8 tamariki held their speech finals last week to great acclaim from judge Alex Oldfield. Congratulations to the following winners -

Maia ~ 1st - Isla K 2nd - Stella M 3rd - Cosmo C
 Whānui ~ 1st - Michaela M 2nd - Elsa C 3rd - Paddy C

Sofia L - Congratulations to Sofia L who has won the Lions Peace Poster Competition with this stunning entry.

Inter- Zone Athletic results - Congratulations to the following students placed in their Inter-Zone athletics events and have the opportunity to represent Kelburn at the Regional Athletics ~ Jonah - Y8 sprints; Jude H - Y4 High Jump; Hugo R - Y4 Long jump; Makayla W - Y5 High Jump; Patrick T - Y8 High jump



Statements :- Yesterday we sent out our final statements for school and activity donations. As always we have had a good response from whānau but we are still sitting below our budgeted figure for 2023 and so we need your contributions. Things such as camps and the cost of swimming for example are not funded through our OPs Grant and while we do acknowledge that times are tough, we really do appreciate the activity contribution as it enables us to cover the costs of the additional activities and opportunities that our tamariki have had as part of their experience at Kelburn.

I look forward to seeing you at Musical Refreshment tonight.

Ngā manaakitanga,
 Andrew

NEXT WEEK AND UPCOMING

Celebration of Learning - The tamariki are preparing for the Celebration of Learning which is next week - Wednesday 6th December from 3 until 5.00 pm. Please come into the spaces and let your child show you their good work and what they have been learning and doing at school.

Looking Ahead - Event Dates - Term 4

You can see the times and add these events to your calendar by using the KNS App

Week	Date	Event
Week 8	Monday 27 November	Gardasil 2nd Dose Y7/8 Board of Trustees Meeting @ 6.30 pm in the staffroom
	Tuesday 28 November	Whānui Swimming @ Kilbirnie Aquatic Centre departing @ 10.50 am and returning to school by 1 pm Pack the Bus donations collected at 12 noon Musical Refreshment @ St Andrew's on the Terrace 6pm
	Thursday 30 November	Tupu Swimming: Tupu Brown @ 9am, Tupu Molloy @ 9:15am; Tupu Wilby @ 10:00am,

		Tupu Miller @ 10:15am Wellington High School - Experience Day for Y8s enrolled in 2024.
Week 9	Tuesday 5 December	Whānui Swimming @ Kilbirnie Aquatic Centre departing @ 10.50 am and returning to school by 1 pm Senior Netball Team vs Staff 1.15 pm to 2.15 pm
	Wednesday 6 December	Celebration of Learning 3 pm to 5 pm
	Friday 8 December	School Hui @ 10.15 am
Week 10	Tuesday 12 December	Whānui Swimming @ Kilbirnie Aquatic Centre departing @ 10.50 am and returning to school by 1 pm Maia Rogaine 9:30am - 12:30pm
	Wednesday 13 December	Whanake Rogaine 9:00am - 12:30pm; Whānui Rogaine 12:00pm - 3:00pm
	Friday 15 December	Xmas School Hui at 10.15 am, Band concert 1 - 1.40 pm
Week 11	Monday 18 December	Y8 Leavers Dinners from 6pm
	Tuesday 19 December	Leavers Assembly from 11.50 am School Water Fight 1.45 - 2.45 pm
	Wednesday 20 December	School finishes at 12 noon

School Notices

Parking Boundary Rd ~ Please **do not** park in front of the garages on Boundary Road. We have received complaints from neighbours who regularly have their vehicles blocked in by parents who have parked in front of their garage.

Our public health nurses are coming to your school in the week starting 27 November to provide immunisation for Y7 and Y8 tamariki, including catch-ups for any tamariki who have previously missed their vaccine. If you have changed your mind or your situation has changed please contact us at res-immunisation@huttvalleydhb.org.nz, or call us on 04 587 2949

If you have not yet consented, but want to, please collect a consent form from the school office or contact us on 04 587 2949

If you have any questions or concerns please contact us at res-immunisation@huttvalleydhb.org.nz, or call us on 04 587 2949

Some reminders as we head into the warmer months (hopefully) :-

- Please ensure your child has their sunhat at school everyday and that it is clearly named.
- Please name all clothing, lunchboxes, drink bottles and tupperware so we can find the owner if left outside.
- Now that the weather is warmer, please consider walking to school as often as possible. We know a large percentage of the school population live within 1km of the school therefore a good brisk walk to and from school is a great way to look after the physical well-being of whānau as well as look after the environment.
- If your child is going to be away then please notify the school via the App, ring 04 4759351 or email admin@kelburnnormal.school.nz
- For those using the drop-off zone on Kowhai Rd please ensure you adhere to the time restrictions.

Next year - If you have siblings turning 5, please let us know or complete the [enrolment form](#) on our website so we can plan for their arrival. If your whānau is moving and your child may be attending another school please let us know too...it helps us plan our organisation for 2024.

Out of zone places - we do have a small number of out of zone places currently available for 2024 at all levels so if you know of people keen to come to Kelburn please direct them to contact the school office at admin@kelburnnormal.school.nz.

Enrolling for Bee Healthy - If your child missed out you are able to make an appointment directly with Bee Healthy. There's two easy ways to enrol your child with Bee Healthy Regional Dental Service:

1. Complete an [online enrolment form](#), or
2. Visit your nearest [Bee Healthy Dental Clinic](#) and complete an enrolment form.

Babies born in the Wellington Region are enrolled at birth with Bee Healthy.

If you have questions about enrolment, eligibility, or unsure if your child is enrolled with Bee Healthy, please call 0800 TALK TEETH (825 583).

If you have changed address or phone number/s and need to update your details [click here](#)

KNS Parent Chat WhatsApp Group

The PTA has a WhatsApp group to enable all the KNS community to communicate with each other about all things KNS. If you want to join this group, please email us on pta@kelburnnormal.school.nz with the following information:

- Your name
- Your phone number
- Your child's name and class

Masks - Tamariki are welcome to wear a mask at school if they wish to and it makes them feel safe.

School App - Contact Details

Please check your contact details on the school app to ensure we have the correct details. If changes are needed please email these to admin@kelburnnormal.school.nz

Teacher Messages - a sort option has been added to the teacher messages section on the school app so parents can easily search for the latest message in date order.

Downloading the app - for those needing assistance with downloading the app please check the app [login video](#) on our website for parents

EzLunch Menu - Subway Wednesday / Pizza Thursday / Sushi Friday [Click here for the Menu](#)

PTA News

Parent Volunteers for Road Patrol Needed

Thank you to our amazing parent volunteers who keep our KNS children safe supervising the road patrol crossings. KNS is unusual – we have two crossing points and need twice the number of volunteers than most other schools. Several of our volunteers are leaving the school at the end of the year and we urgently need more parent volunteers to fill our roster for 2024. Morning shift is 8.20–8.50am and Afternoon is 2.50–3.20 pm. The role is providing support and backing-up your crew of trained road patrollers. Please email the PTA if you're keen to help.

Don't forget to buy your Tea Towels.



Help us fund gully maintenance by purchasing a **KNS Gully Tea Towel!**

A GREAT GIFT OR KEEPSAKE!

100% cotton
Natural colour
Easily mailed
Long lasting

\$20EA OR 3 FOR \$50

You can buy these awesome tea towels:

- at the school office (EFTPOS AVAILABLE)
- online via myKNS
- online via GoBillie from your bank transfer (CLICK HERE FOR FOOD)

(COLLECTION AND FREE LOCAL DELIVERY AVAILABLE)

School Term Dates 2024

Term	Start Date	End Date	Public Holidays/Teacher Only Days
------	------------	----------	-----------------------------------

Term 1	Wednesday 31 January	Friday 12 April	Tuesday 6 February - Waitangi Day Thursday 28 March - Kāhui Ako Teacher Only Day Friday 29 March - Easter Friday Monday 1 April - Easter Monday Tuesday 2 April - Easter Tuesday
Term 2	Monday 29 April	Friday 5 July	Friday 31 May - Teacher Only Day Monday 3 June - King's Birthday Friday 28 June - Matariki
Term 3	Monday 22 July	Friday 27 September	Friday 30 August - Teacher Only Day
Term 4	Monday 14 October	Wednesday 18 December	Monday 28 October - Labour Day Tuesday 29 October - Teacher Only Day

Specific Steps to Teaching Your Child Self-Regulation

Imagine this:

Your child bursts through the door, slams it, and throws their backpack on the floor.

Instead of: "This is NOT how we enter this house!"

You say: "Wow, you must have had a horrible day. What happened?"

Your child says... "I hate my teacher! She is so stupid!"

Instead of: "How dare you talk like that!"

You say: "She did something that got you really mad."

A few minutes later, when your child is calmer...

You say: "Why don't you sit down and have something to eat or drink? You can tell me what happened."

Let your child talk without correcting them or arguing. This will further calm their nervous system.

Then, address their behavior: "I know you are mad at your teacher. However, every person deserves respect, even when we are mad at them. Let's make a plan of what you can do when you're feeling very mad at someone."

Key takeaways:

- When children are dysregulated, we cannot teach them a lesson.
- Saying "Don't talk like that!" will just cause your child to shut down and undermine your connection with them.
- It is YOUR calm and empathetic response that will teach their nervous system that it is possible to be upset about a situation and keep your anger in check.

More families will now qualify for Childcare Assistance and the rate will increase for those already qualified, which means you may be eligible for assistance to send your child to Kelly Club. Please follow this link to find out more: https://drive.google.com/file/d/1EgHRGbeAEvTHYilaBHp7uauZzw_mwIJA/view

Kelly Club - Check us out on Facebook - [Click Here](#)

For enrolments and enquiries, contact the Supervisor on 021 744636 or kelburnnormal@kellyclub.co.nz
 Kelly Club Programmes focus on giving children aged between 5 and 13 the opportunity to do things they enjoy in a safe, supportive, and encouraging environment.

Kelburn to Enrol go to www.kellyclub.co.nz

PAGE 1



General information: We believe in giving children opportunities to do the things they love and enjoy in a supportive and encouraging environment. We provide quality childcare in safe and fun surroundings for children out of school. Our holiday programme is focused around sports, games, and outings to local attractions. Our friendly staff are passionate about working with children. They are provided with training on behaviour management techniques, first aid and activity planning/delivery.

Who can attend: Children aged 5-13 yrs

What do you need to bring: Shoes and appropriate clothing, jacket or sweatshirt, hat, drink bottle and food.

Food: Please bring plenty of packed food and drink for morning tea/lunch/afternoon tea. Lunch will be from approximately 12:30pm to 1:00pm each day.

Programme activities: Programme activities are adapted to suit children of all ages and children may be grouped by age depending on numbers. Programme activities may vary without notice dependent on weather conditions and programme numbers.

Payment details: Payment is required before the holiday programme begins. An invoice will be issued when a completed booking is received. All payment details will be included on the invoice.

Work and Income OSCAR Subsidy: Parents / caregivers that meet certain criteria will be able to access a WINZ subsidy to help cover the cost of our programme. For more information visit www.workandincome.govt.nz.

Please note: Every care will be taken to ensure the safety of your child/ren and their property. However, organisers of Kelly Club accept no liability for any injury sustained to your child/ren or any loss or damage to his/her property whilst at a programme, if your child/ren are collected late after the conclusion of the programme you will be charged \$20 per 15 minutes or part thereof.

DECEMBER 2023 HOLIDAY PROGRAMME

KELBURN NORMAL SCHOOL

Website: kellyclub.co.nz/kelburn-normal
 Contact: Mercy Wilkins
 Email: kelburnnormal@kellyclub.co.nz
 Phone: 021 744 636
 Facebook: @KellyClubKelburnNormal
 Address: 16 Kowhai Road, Kelburn

	Mon 11 December	Tues 12 December	Wed 13 December	Thurs 14 December	Fri 15 December
WEEK 1	SCHOOL DAY	SCHOOL DAY	SCHOOL DAY	SCHOOL DAY	SCHOOL DAY
	No Holiday Programme Today.	No Holiday Programme Today.	No Holiday Programme Today.	No Holiday Programme Today.	No Holiday Programme Today.
	Mon 18 December	Tues 19 December	Wed 20 December	Thurs 21 December	Fri 22 December
WEEK 2	SCHOOL DAY	SCHOOL DAY	SCHOOL DAY	SCHOOL DAY	SCHOOL DAY
	No Holiday Programme Today.	No Holiday Programme Today.	No Holiday Programme Today.	TRIP DAY: ZOO Join us for an awesome trip day to Wellington Zoo. Please remember a big lunch, drink bottle, shoes and a hat. \$20 extra for the day.	CHRISTMAS PARTY Ho Ho Ho! There'll be lots of festive games, crafts and treats at this Christmas party so come along with plenty of holiday cheer to end the year with!

FULL WEEK: \$280
8am-6pm

FULL DAY: \$59
8am-6pm

SCHOOL DAY: \$47
8:45am-3:15pm

HALF DAY: \$39
8am-1pm or 1pm-6pm

EVENT DAY: Extra \$20
(Included in Full Week)



BOOK ONLINE NOW AT www.kellyclub.co.nz



Website: kellyclub.co.nz/kelburn-normal
 Contact: Mercy Wilkins
 Email: kelburnnormal@kellyclub.co.nz
 Phone: 021 744 636
 Facebook: @KellyClubKelburnNormal
 Address: 16 Kowhai Road, Kelburn

JANUARY 2024 HOLIDAY PROGRAMME

KELBURN NORMAL SCHOOL

General Information: We believe in giving children opportunities to do the things they love and enjoy in a supportive and encouraging environment. We provide quality childcare in safe and fun surroundings for children out of school. Our holiday programme is focused around sports, games, and outings to local attractions. Our friendly staff are passionate about working with children. They are provided with training on behaviour management techniques, first aid and activity planning/delivery.

Who can attend: Children aged 5-13 yrs

What do you need to bring: Shoes and appropriate clothing, jacket or sweatshirt, hat, drink bottle and food.

Food: Please bring plenty of packed food and drink for morning tea/lunch/afternoon tea. Lunch will be from approximately 12:30pm to 1:00pm each day.

Programme activities: Programme activities are adapted to suit children of all ages and children may be grouped by age depending on numbers. Programme activities may vary without notice dependent on weather conditions and programme numbers.

Payment details: Payment is required before the holiday programme begins. An invoice will be issued when a completed booking is received. All payment details will be included on the invoice.

Work and Income OSCAR Subsidy: Parents / caregivers that meet certain criteria will be able to access a WINZ subsidy to help cover the cost of our programme. For more information visit www.workandincome.govt.nz.

Please note: Every care will be taken to ensure the safety of your child/ren and their property. However, organisers of Kelly Club accept no liability for any injury sustained to your child/ren or any loss or damage to his/her property while at a programme. If your child/ren are collected late after the conclusion of the programme you will be charged \$15 per 15 minutes or part thereof.

	Mon 22 January	Tues 23 January	Wed 24 January	Thurs 25 January	Fri 26 January
WEEK 3	PUBLIC HOLIDAY WELLINGTON ANNIVERSARY No Holiday Programme today.	LET'S GET MESSY Wear your messiest clothes today as we get messy at the centre! From slime to dirt, to all things crazy and fun, we cannot wait to see you all there!	SUMMER SPLASHIN' It's hot out there so let's splash and splash to cool off the best way we know how... Water Fight!	ZAPPO BALLOON WORKSHOP Join us for an awesome day where Zappo teaches us all about balloons with his epic balloon workshop! \$20 extra for the day.	YEAR 3000 Welcome to the year 3000! Not much has changed but robots are our friends and the aliens make good food!
WEEK 4	AROUND THE WORLD Join us as we travel across the globe together! From visiting Egypt to England to Germany and France, we're crafting things from around the world!	WATER DAY AOTEA LAGOON Join us for an awesome day at Aotea Lagoon where we'll have lots of water fun! Please remember a big lunch, drink bottle, togs, shoes and a hat. \$20 extra for the day.	SCHOOL DAY No Holiday Programme Today.	SCHOOL DAY No Holiday Programme Today.	SCHOOL DAY No Holiday Programme Today.
	FULL WEEK: \$280 8am-6pm	FULL DAY: \$59 8am-6pm	SCHOOL DAY: \$47 8:45am-3:15pm	HALF DAY: \$39 8am-1pm or 1pm-6pm	EVENT DAY: Extra \$20 (Included in Full Week)



BOOK ONLINE NOW AT www.kellyclub.co.nz

KELLY SPORTS IS BACK THIS JULY 2023 WITH THE EVER POPULAR FOOTBALL HOLIDAY PROGRAMME!

Tues 16 Jan, Weds 17 Jan, Thurs 18 Jan 2024

Tues 23 Jan, Weds 24 Jan, Thurs 25 Jan 2024

9.30am-12.30pm

For children aged 5-12 years

Held in the Green Room (artificial turf) at the Wests Rugby clubrooms, Ian Galloway park, Wilton.

This programme is perfect for "Beginner's" and those wanting to find out more about the game and have fun. Come along and improve technique, knowledge and skills.

In this programme we will focus on the core skills of control, dribbling, passing, tackling and shooting but MOST importantly having as much FUN as possible!

Book online at www.kellysports.co.nz

SPECTACULAR LIVE SCIENCE FOR THE WHOLE FAMILY

★★★★★ "Nanogirl Science Theatre was interactive and exciting and fun. My children loved it!"

★★★★★ "Nanogirl was fabulous! Educational, Entertaining and Explosive!"

★★★★★ "Amazing show for children and adults! A fantastic way to encourage and enjoy science with your whānau."

NANO GIRL LIVE!

For Ages 5+

LITTLE BANG, BIG BANG

INTERACTIVE EXPLOSIVE Science Theatre!

CHRISTCHURCH

Kelburn Critter Care

PET FEEDING & HOUSE CARE WHILE YOU ARE AWAY.

- PET FEEDING
- WATER PLANTS
- COLLECT MAIL
- CARING
- LOCAL (KELBURN AREA ONLY)

BIGAIR GYMS popular December Drop & Shop Holiday Programme is back, running Mon 18th – Wed 20th December 2023! Full day and half day sessions are available. This is a wonderful opportunity for kids to keep active, while you get those final pre-Christmas preparations done! BIGAIR GYMS January Holiday Programme is also running Mon 8th – 26th Jan 2024. Bookings are open online now at www.bigairgym.co.nz

Please contact us with any inquiries:

Bigair Gym Owhiro Bay: ph. 383 8779, e. wgtm@bigairgym.co.nz at 14 Landfill Road, Owhiro Bay.

Bigair Gym Tawa: ph. 232 3508, e. office@bigairgym.co.nz at 10b Surrey Street, Tawa.