

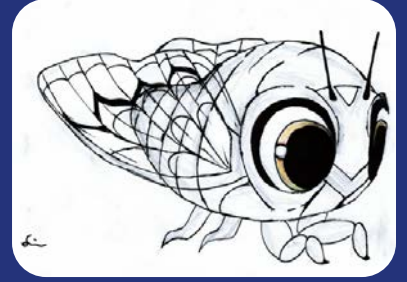


VOICE OF NGĀ TĀTARAKIHI NOVEMBER 2025

NGĀ TĀTARAKIHI O AHUMAIRANGI

KELBURN NORMAL SCHOOL

Where students learn creatively and strive for excellence in preparing
for lifelong learning Kia auaha te ako a ngā ākonga me te whai i te iti
kahurangi mō te ake kōwhiri



PRINCIPAL'S/TUMUAKI UPDATE

Kia ora koutou

Haere mai and welcome to our November edition of Voice of Ngā Tātarakihi! It has been the most lovely time at kura with all our tamariki being busy with many activities as we lead up to the finish of the school year in a few weeks time. All these events highlight our wonderful learning programme here at Kelburn. The Celebration of Learning this week was a truly joyous occasion where the tamariki showed their whānau the work they are most proud of! It was standing room only in Tupu there for a while and I enjoyed talking to parents and tamariki. Thank you to all the parents that supported their tamariki on the night. I know how proud and delighted they were to show their families all their hard mahi over the last few terms.

The Musical Refreshment concert at St Andrew's last week was very special indeed and reflected the huge mahi of all the tamariki involved – some of them involved in many performances – and my huge thanks to all the staff involved in the planning, running and leading our musical ensembles and the senior kapa haka at this event especially Mrs Katharina Vautier, Mr Henare Parata and our Deputy Principal Ms Danielle Sanders.

The PTA Talent Quest earlier in November was such a highlight – we have so many talented tamariki in so many ways from singing, dancing, gymnastics, magical tricks and much much more – everyone who got up on stage were absolutely brilliant! My huge thanks to the senior students who helped with sound and lighting and huge thanks to the PTA team who did such a magnificent job organising the event.

I look forward to seeing many school whānau at all the different assemblies over the next few weeks and especially at the Year 8 Leavers' events as we farewell these tamariki from Kelburn.

New Tamariki

Welcome to our new tamariki who started at Kelburn in September and October – we know our tamariki and community will show you manaakitanga and help you to get to know everyone at our kura. Haere mai!

Tupu Tahi – Frieda K and Hugo VD

2026 Staffing Structure

It is my pleasure to inform the school community of the staffing for 2026.

Principal – Kent Favel

Deputy Principal – Danielle Sanders

Associate Principal – Libya Munn

Tupu Tahi – Susie Brown Y1

Tupu Rua – Jodie Corcoran Y1

Tupu Toru – Wendy Bamber Y1/2

Tupu Whā – Marianne Blair (M–Th)/Jo Hamid (F) Y2

Whanake Tahi – Ella Ayto Y3/4
Whanake Rua – Sophie Bishop Y3/4
Whanake Toru – Kyra Mowbray Y3/4

Whānui Tahi – Hugo Miller Y5/6
Whānui Rua – Rebekah Rasmussen Y5/6

Māia Tahi – Jacqueline Croft Y7/8
Māia Rua – Libya Munn (M–W)/Tom Pearce (Th–F) Y7/8
Māia Toru – Sophia Wright Y7/8

English Language Teacher (ELL) and Classroom Release Teacher (CRT) – Rachel Smith
Provisionally Certificated Teacher Release (PCT) and CRT – Jo Hamid, Tom Pearce and Jenny Cossey
Te Reo/Kapa Haka – Jeremy Desmond and Henare Parata

Office Manager – Loraine Best
Receptionist/Accounts Payable – Bo van der Lugt
Learning Assistants – Katharina Vautier, McKenzie Anderson, Anna Mahon, Sofia Olds, Isla Neilson
Caretaker – Jason Rihairi/Jay Omundsen

Staffing Changes

We farewell at the end of this term, **Miss Andrea Molloy**, who has been teaching at Kelburn for the past 6 years. Miss Molloy is moving to the Waikato to teach at Morrinsville School. We thank Miss Molloy for her huge mahi and commitment to her tamariki over the years and also the Kelburn community. Miss Molloy will be hugely missed by us all, and we congratulate her on her new position and wish her all the best for 2026 and beyond!

We also farewell **Mrs Kaajal Chambers** and **Miss Ruby Dickinson–Yeoman**, who both finish their fixed-term Learning Assistant positions at the end of this term,. **Mrs Jackie Di Somma** also completes her fixed-term teaching position in Tupu. We thank Mrs Chambers, Miss Dickinson–Yeoman, and Mrs Di Somma for all their mahi with the tamariki and Kelburn this year and wish them all the best for their futures.

I am delighted to welcome the following new staff to the Kelburn team for 2026. **Miss Sophie Wright, Mrs Wendy Bamber, and Miss Ella Ayto** will be joining the teaching staff. We also welcome **Miss Isla Neilson and Miss Sofia Olds** to the Learning Assistant team for 2026. Congratulations also to Ms Rebecca Rasmussen, whose Acting Team Leader of Whānui position has become permanent from 2026. Due to Whānui having only two classes in 2026 we have assigned two of our learning assistants to work separately with kaiako in our Year 5 and 6 classes. I thank our School Board for its financial support of this initiative.

A warm Kelburn welcome to **Mr Jay Omundsen** who has joined the support team as the Acting Caretaker. Jay takes over from Mr Nick Del Rey, who left earlier this term. Jay will be acting in the caretaker's role until Mr Jason Rihairi returns.

We are delighted to have such talented and settled staffing for 2026 in all areas of the kura, and we are all looking forward to the new year.

Board letter to community re Te Tiriti law changes

Please see the message to Kelburn School whānau and community about the recent changes to the Education and Training Act 2020 to remove the requirement for school boards to give effect to Te Tiriti o Waitangi. [Click to view](#)

Tamariki Successes

Congratulations to the following tamariki who have achieved success here at school and around Wellington and the world in competitions and activities. Well done, everyone!



HEART Awards

Heart Awards are given out every fortnight at our Friday afternoon School Hui in the Hall. The HEART awards represent tamariki who are outstanding citizens of Kelburn Normal. Recipients who receive a HEART award show Hauora, Excellence, Aroha, Resilience and Teamwork as they go about their day in their Ara Teams and also when they represent Kelburn. Recipients are quality role models who inspire others! Kai pai to the following tamariki who have been acknowledged this term:

Week 5 Term 4 HEART Recipients

Finlay G, Leo B, Lucie D, Zoey J, Leo FT, Sophia Y, Eileen T, Joaquin SV, Harrison K, Cindy B, Harry T

Week 6 Term 4 HEART Recipients

Jonty W, Edward Q, Juniper H, Roy G-F, Delphine D, Hugh W, Kai C, Ruby M-I, Olive H, Bloem S, Ezekiel R

Western Zone & Inter Zone Athletics

Congratulations to all of our athletes who represented Kelburn at Western Zone Athletics. A special mention to the following students, who qualified for the interzone competition by placing in the top three for their category:

Year 4		Year 5	Year 7	Year 8
Qiana R - 60m (1st), High Jump (1st)		Liv Y - 200m (2nd)	Finn R - Discus (3rd)	Paddy C - 200m (2nd)
Robbie O - Long Jump (3rd)		Phoebe H - High Jump (3rd)	Makayla W - High Jump (1st)	Rohan H - Long Jump
		Max N - High Jump (3rd)		
		Elliot B - Long Jump, Quoits (AWS, 1st)		

Regional Athletic Results

A huge congratulations to Makayla and Elliot for their efforts at Regional Athletics.

Year 7 High Jump - Makayla Sixth place (High Jump), with a personal best of 1.31m

Year 4 AWS - Elliot - Elliot Beech - Second place (short and long distance sprints), third place (quoits)

Abacus International Prodigy World Championship



Congratulations to Adhrit who participated in the Abacus International Prodigy Competition and secured the Third Runner-Up position among more than 6,000 students who took part. The event was held in Chennai, India. An amazing achievement – we are so proud of Adhrit!

EPro8 Challenge Success

The EPro8 Challenge is an inter-school science and engineering competition. Every year over 35,000 students from throughout New Zealand take part. Kelburn Normal's EPro8 team had tamariki competing in the Regional Grand Final of the Wellington Region EPro8 competition this month. I am delighted to share that the Kelburn Normal Epro8 Team placed 5th out of 12 teams in the final! A fantastic result! Congratulations and well done to the following tamariki: Louis W, Aurelia D, Holly K and James C

Hawkes Bay Junior Lawn Tennis Championship

Congratulations to Louis W and William W who recently won the Boys 12 and under doubles tennis title at the Hawkes Bay Junior Lawn Tennis Championship. Congratulations Louis and William on this outstanding achievement!

Have a lovely weekend with your whanau everyone.

Ngā mihi nui
Kent Favel

END OF YEAR REPORT CHANGES

You will be aware that there have been an immense number of changes implemented at a rapid pace in the Aotearoa education system. We have a new and evolving curriculum, which is significantly different from the previous curriculum. The Ministry of Education has also changed the expectations around reporting. Schools must report on students' progress using five descriptors for Oral Language, Reading, Writing, and Maths. We would like to inform you of all of these descriptors that we have been working on. They are:

Emerging

Students require support to meet curriculum expectations for their year level and/or goals as described in their personalised learning plan.

- Is beginning to understand some learning ideas for their year level with a lot of support.
- Requires support to develop appropriate knowledge and skills.
- Is making some progress in ways that are meaningful and aligned to their strengths and needs, with significant support.

Developing

Students are making some progress towards curriculum expectations for their year level.

- Can engage in learning activities with some guidance and assistance.
- Responds to support and is developing knowledge and skills

Consolidating

Students are meeting many curriculum expectations for their year level and are steadily strengthening their understanding across learning areas.

- Can engage in most learning activities with increasing independence.
- Can make some simple connections and reflections.

Proficient

Students are meeting curriculum expectations for their year level.

- Can consistently engage in learning activities successfully and independently.
- Can reflect and share about their learning.

Exceeding

Students are exceeding curriculum expectations for their year level.

- Consistently demonstrates an advanced understanding of concepts, knowledge and skills for their year level.
- Can clearly communicate their thinking and transfer knowledge to a range of situations.

These descriptors differ from the levelling used previously under the old curriculum framework. The changes to the curriculum and content taught at each year level are still very new. The goalposts have shifted significantly, and this curriculum is being labelled as 'aspirational', meaning it is more challenging than the previous iteration. As this year, teachers have been juggling the multiple versions of refreshed curricula, 2025 could be considered a bridging year. As a result, your child's descriptors may not align with the grades given in the mid-year reports. This is because those grades were in relation to the previous curriculum.

We want to reassure you that all children are making academic progress and that learning is a journey unique to each person. Teachers have crafted report comments to concisely reflect your child's next steps. If you have questions relating to your child's learning, please contact your child's home learning teacher.

What's the latest delights from the Tupu team?

If you ask anyone in Tupu what is the best thing in the week and the answer will be Mahi Ngātahi on a Monday morning. Everyone gets to choose and follow our interests whether it is in mathematics, science, or other stem activities that involve sharing, problem solving, being creative, independent and resourceful all the while working with others.



The endless joy of using the trucks, cars and trains, magnetic tiles, the delights of our Sylvanian families and their worlds, the cooking set creations with a handy doctors kit just incase, the biggest container of LEGO, marble runs, jigsaw puzzles, construction kits and gears, puppets and theatres, gross and fine motor skills challenges, underwater and fairy lands, and so many dice activities makes this the best way to start our action packed week. In the words of a Tupu member- Mahi Ngātahi is the best.

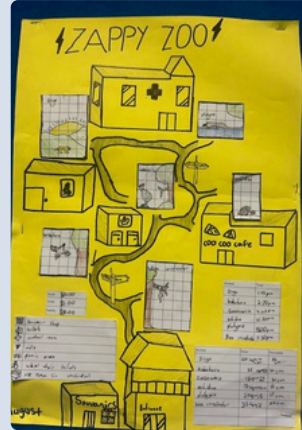
What will we be up to next in the Tupu team...stay tuned to find out.

TE ARA WHANAKE

Whanake Update

Zoo Maps

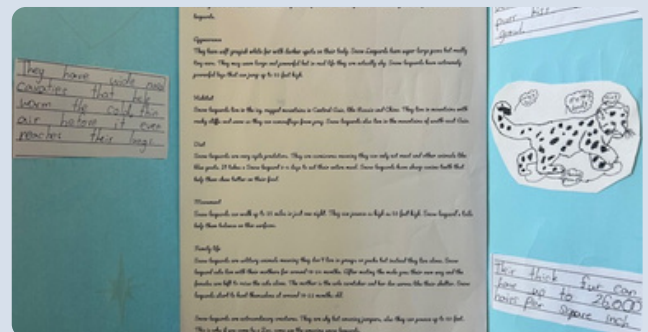
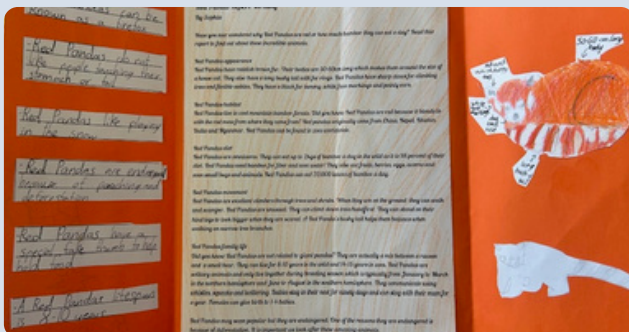
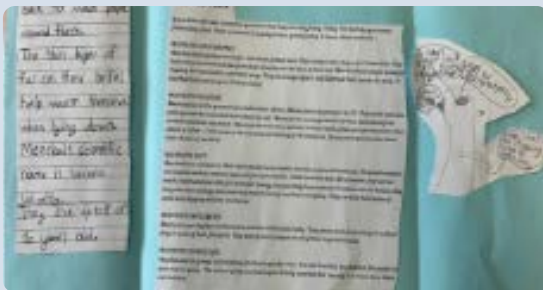
In mathematics, we have been busy applying our multiplication and addition skills to calculate area and perimeter. As part of this learning, we designed our very own zoos, and carefully measured the size of each enclosure.



Animal Research

As part of our integrated unit, we have been researching different zoo animals. We spent time reading, summarising information and notetaking, and have then used our research to write informational reports. We have been learning about how different genres require different styles of writing, and focusing on including specific facts and details, rather than descriptive elaborations. This has also been a great opportunity to practise paragraphing our writing.

In Whanake Rua, we have turned our reports into brochures – check out some of our finished products below!



TE ARA WHANAKE

Whanake Update

In Whanake Tahi, with Mrs Hamid, we created colourful villages, and quirky houses. We looked at the artist Friedensreich Hundertwasser as our inspiration. We hope you enjoy the following artworks by: Henry, Leo T, Leo F, Arabella, Emily, Ferne, Meredith, Felix, Roman, Carys, Matilda, and Weichen.



Carys



Ferne



Matilda



Henry



Matilda



Felix



Meredith



Weichen



Roman



Arabella



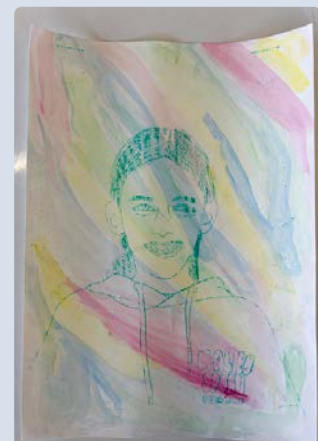
Leo. T



Leo. F

Carbon Copy Crayon Portraits

In Whanake Toru, we created portraits using various mediums. First, tamariki used watercolour to create a backdrop. Then, their pictures were taken. After they covered the back of their images with crayon, they were able to trace over their physical features and other details. This printing technique transferred the crayon onto the watercolor paper, leaving a beautiful effect. See if you can recognise any of the tamariki from our class!



TE ARA WHĀNUI

Kia ora Parents and Whānau,

Speeches Underway!

Whānui Children have now begun presenting their speeches to their peers within their Home learning Teams. For some, public speaking is nerve-wracking. It's been great to see many of them stepping outside their comfort zones and giving it their best effort. All children practice key speaking skills such as using a clear voice, confident body language, and pacing their delivery. These in-class presentations are part of the learning process, in which the children listen to each other and evaluate the content and delivery of each message.

Each child has chosen a topic they believe 'needs to be protected'. We've already seen a wonderful mix of subjects, including protecting our natural environments, protecting our roads and hospitals, the arts, our family histories, diversity in classrooms, our friendships, the memory of our dead and loved ones, protecting ourselves online, among others. It's an important life skill for children to be able to communicate confidently and be persuasive.

Here are some snippets from the children's work. See if you can guess what each topic might be about.

The first thing I see is the bright orange lollie pop signs. I see my friends on the other side. I 'm waiting on the other side., I smell the fresh air and feel the wind howling around me. All the children swoop past me. I hear the patrollers shouting 'signs out, check, clear, cross now'. – April

Walking around in the dark with a lantern having to aim it in every direction to make sure you're not going to fall into a river. It's hard to imagine a world without lightbulbs, a time like cavemen lived, lightbulbs help us see in the dark. – Ewan

Imagine a time when you had fun! Ever wished you could relive that moment? Well some kids don't get to have fun their whole lives. They were told grades are everything by their parents and they are not good enough. Having no fun can lead to depression. – Avery

Wow! I asked two people what they knew about Italy, and all they knew was that it was the home of pizza! I am Italian. And there is more to Italy than pizza. It is the home of lots of things. There is the food, but there is more than this. – Giancarlo

Every day, humans are using items without knowing that they are slowly killing our planet, things like hairbrushes, toothbrushes, plastic soap bottles, packaged foods, and a bunch more.– Madeleine

Did you know that over half the world has been at war in the last ten years?! It's true, 92 countries were fighting with another country within the last ten years. So that's why we need to protect peace because humans kill ourselves faster than dying from natural stuff. – Rowan.

Imagine standing on a beautiful beach, soft sand beneath your feet, the sound of waves crashing, the salty breeze in the air. Now, picture that same beach covered in plastic bottles, old fishing nets, and candy wrappers. Sadly, this is the reality for many coastlines around the world today. Our ocean, the heart of our planet, is drowning in plastic, glass and more. When I was at the beach during the holidays, I saw glass and plastic floating near the rocks. – Priyanka

Every year or two me and my family go to the DOC campsite in Waikawau Bay, one of the many campsites around New Zealand. My family has been going there since my Grandma was a kid. – Sam.C

TE ARA WHĀNUI



Budding Botanists Continued.

The natural world offers an engaging and curious lens for science learning, especially when paired with art. The children's plant studies culminated and came together in a final art and science workshop run by Wellington Artist, Dr Gabby O'Connor.

The children went on a journey back through time. They were shown early paintings and illustrations of Te Whanganui a Tara landscapes and environments, pre-settlement days. Children looked at some of the traditional uses for native plants. An important part of Mātaurangi Māori. Printed leaves were then observed, grouped, and sorted according to their own categories. Children then created different compositions, shapes, and patterns over light boxes. The room was 'lit up' with smiles. Don't forget these works will be part of an exhibition at Te Matapihi ki te Ao Nui, Wellington's central library on Victoria Street, in March 2026.

But the bright doesn't stop there. Miss Hilliard's Monet-inspired Lilies are a vibrant burst of colour that we look forward to exhibiting as an installation at the celebration of learning. See you all there!

Ngā mihi nui,
Rebekah Rasmussen, and Hugo Miller
rebekahr@kelburnnormal.school.nz
hugom@kelburnnormal.school.nz



What's Happening in Māia?

Art

Siapo: Māia students applied pastel and dye media to produce vibrant Siapo arrangements. They explored symmetry, balance, hue, and tone. The colour combinations are striking and uplifting. We hope you have a chance to enjoy this addition to our learning space as much as we do.



Interzones Athletics

Well done to Paddy, Makayla, and Finn who attended Interzones Athletics day! Makayla came second in high jump and is off to regionals!

EPRO8

James, Louis, Holly, and Aurelia made it all the way to the EPRO8 finals! To get to this point, they had to place in the top three of our school event, inter-school heats, and semifinals. Last week, they placed fifth out of twelve finalists. We are immensely proud of these students. They showed determination, clear and direct communication skills, collaboration, and a solution-focused approach. Groups could choose from a selection of challenges, our students created a remote controlled car that could stop independently at warning tape, beeped when reversing, and included a platform that could raise a balloon off the ground.



Maths

Geometry Project: Our students are building magnificent sculptures to enhance Wellington's Waterfront. This is a visual feast and creativity at its best! As well as creating 2D and 3D floorplans and writing an artist's statement students need to incorporate the following items into their design:

- At least two different platonic solids (not including a cube)
- At least two different non-platonic polyhedra
- A wallpaper OR frieze group tessellation
- An object plus two enlargements (the original object, the object enlarged by a scale factor of x and a scale factor of y . These can be arranged in a sequence, or exist separately within the model.
- An arch with a diameter of 15cm, and a height of at least 15 cm. The feet of the arch must touch the ground.
- A reference to one of Newton's laws of Motion
- The design needs to have a line of Symmetry

Tessellations: The students have designed tessellations. Exploring line and angle our tamariki have learnt that tessellations are shapes that fit together in a repeated pattern. It took time and skill to avoid gaps and overlapping shapes.



Speeches

Māia students are meeting world issues head-on! They delivered telling speeches to share their thoughts about important skills for their future lives. The semi-finals this week featured 14 of our best speeches, with eight students making it to the finals next week on Monday 1st December. Our competition will be judged by Eliza Bartlett, an English Teacher at Wellington Boys College. She is well equipped to assess the students' speeches and will no doubt encounter some of the students next year.

Here are some examples from the students' speeches:

We were supposed to pick a speech topic of what is the most important skill for the future and I was stuck. Obviously AI is shaping the future faster than humans could imagine or do themselves. Creativity and trying new things is the only way to fix said problems and make our future look brighter than it is right now

- Arlo

Can I get a raise of hands if your family uses reusable bags? Good job if you put your hand up, Did you know that an estimated 5 trillion plastic bags are used worldwide each year and less than 1% of that is recycled. However if everyone shopped with reusable bags that would stop 11% of climate change. If you grow out of your clothes do you give them to your siblings or cousin or do you give them to the second hand shop for others to buy and use?

- Elliot

You can't trust everything you see on the internet. All of you have probably heard this at some point. But so many people forget, no one shows you their worst pictures, only their best. We tend to compare ourselves to everyone else and our stuff to other peoples. But you don't need the same type of clothes or water bottle as someone. This is yet another reason to stop using tech and go and do whatever you like. Instead of copying everyone else. And don't take everything you see at face value.

- Mahlia

What is the most important skill for the future? Is it creativity? Communication? Adaptability? I thought about it for a while, but I realized, connections are what form society. Think about it. If no one knew anyone else, then where would we be? Sadly, In the modern world, people are drifting apart on separate islands, into a sea of loneliness.

- George

If you're in the right mental place to have information like this presented to you and believe it, you might become like one of these people. Humans seek out information to support their own belief, which leads to people going insane in echo chambers online, and searching for information to support certain views makes it easier for fake information to be believed.

- Simone